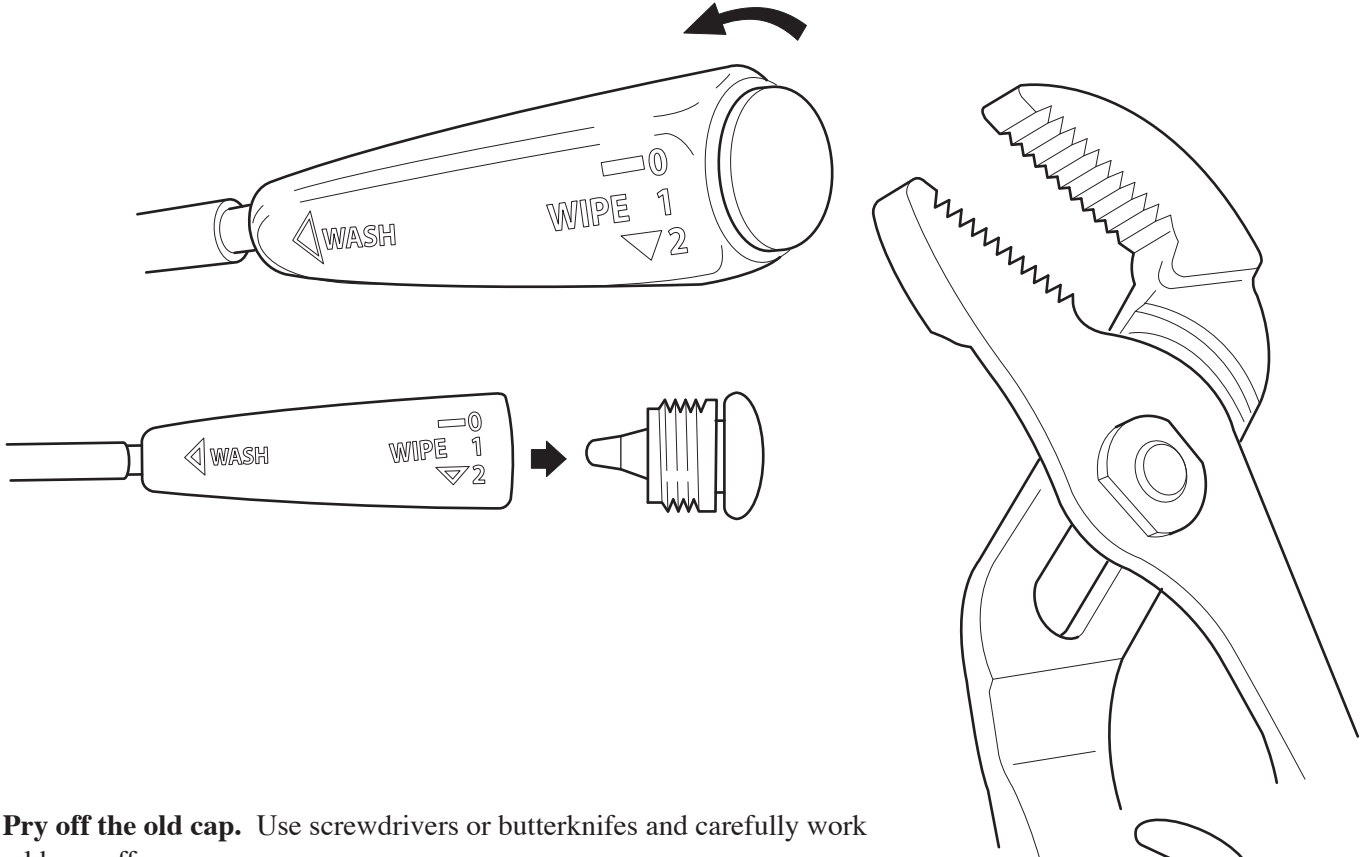


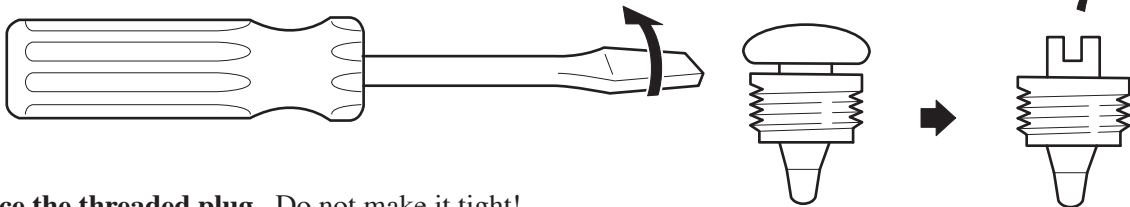
MGB Stalk Cap Installation Instructions

Note: this procedure is best done at a workbench, however it can be accomplished in the car.

1. Unscrew the old cap. Often, this can be accomplished with your thumb and forefinger, by pressing and turning. If necessary, use channel pliers, being very careful to grip only the metal cap.



2. Pry off the old cap. Use screwdrivers or butterknives and carefully work the old cap off.



3. Replace the threaded plug. Do not make it tight!



4. Press on the new cap. Hold the new cap by the edges only, otherwise you might dent it! Firmly hold the black plastic stalk body with one hand, while you press/force the new cap on with your other. If your fingers aren't strong enough, hold a 9/16" socket against the cap (it will only contact the perimeter) and press that.

